

TOTAL NEWS

Property Patrol...CCTV Monitoring...Facility Protection...Equipment Rental...Fire Watch....

VOLUME 2, ISSUE 9

SEPTEMBER 2010

[Read Past Issues](#)

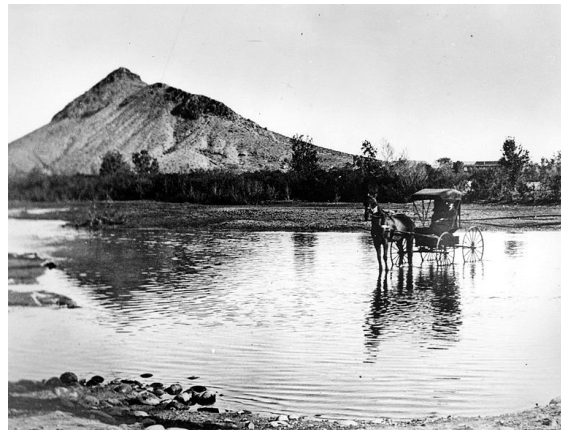
History of Tempe

When Fort McDowell was established on the upper Salt River in 1865, it became necessary to procure steady supplies of food and animal feed. Two small encampments were set up by enterprising farmers near Tempe Butte to grow crops; one was Hayden's Ferry, named for the river crossing service at that location, and the other was San Pablo, slightly east of the Butte, and established by Mexican settlers from southern Arizona.

The ancient Hohokam canals were quickly dug out and expanded to allow for the irrigation of crops. In short order, area farms were feeding the military outposts and mining camps in Arizona. The two settlements grew quickly, and soon became one. The combined community was renamed Tempe in 1879, at the suggestion of Darrell Duppa, a Cambridge educated Englishman who thought the location was reminiscent of the Vale of Tempe in Greece. Mr. Duppa also came up with the name "Phoenix"

In 1885, Tempe was designated as the site of the Territorial Normal School by the legislature; this was a training institution for teachers at Arizona's schools, and the forerunner of ASU. In 1887, the Maricopa and Phoenix Railroad was established, crossing the Salt River at Tempe, and linking the area with the national railway system, thus making the town a major commercial and shipping center for the surrounding areas.

The farms are gone now, but Tempe thrives; home to one of the largest universities in the country, and to many commercial and industrial enterprises, including US Airways. It is a popular tourist destination, and an entertainment center for the metro Phoenix area. It is also the city T.E.A.M. proudly calls "home".



Ford across Salt River at modern day site of Ash Avenue Bridge, Tempe, Arizona. View looking southeast toward Tempe Butte.

Equipment Spotlight



Our newest equipment venture is a high rising venture, and the pun is fully intended. This scaffolding is many times stronger and more stable than typical construction scaffold. It also is erected and torn down much faster. This system works very similar to the old tinker toy system that some of us remember from our childhood, but strong enough to bear many tons of weight. It has been used to build the largest festival stages in both Europe and the United States.

The massive flexibility of the system allows for the construction of stand alone observation or mixer towers, bleachers, stages, entrances and walk ways. The use of this scaffolding is limited only by your imagination. We are currently in the process of training our logistics staff on the construction and will be building observation towers at Tempe Beach Park for the upcoming Fall Frenzy events.

UPCOMING EVENTS

DATE	VENUE	EVENT
Sept 1	Dodge Theatre	David Gray
Sept 2	Westgate	Cardinals Game
Sept 14	Cricket Pavilion	Jonas Bros
Sept 15	Dodge Theatre	Honda Civic Tour
Sept 17-19	Tempe Beach Park	Fall Frenzy
Sept 18	Cricket Pavilion	Brad Paisley
Sept 18	Dodge Theatre	Margaret Cho
Sept 19	Dodge Theatre	Cheaper to Keep Her
Sept 23	Dodge Theatre	Dave Ramsey
Sept 24	Cricket Pavilion	KISS
Sept 24	Tempe Center for the Arts	Ballet Under the Stars
Sept 25	Cricket Pavilion	Zac Brown Band
Sept 25	Dodge Theatre	Daniel Tosh
Sept 30	Heritage Square	Rainbow Festival

Don't Forget!

Healing Fields will take place at Tempe Beach Park September 10-12 and will be open to the public 5 AM to 11 PM every day. On September 11 the event will open with a ceremony at 5 AM, and later that night a candlelight vigil will be held at 7 PM. If you are interested in donating blood, there will be a blood drive there on Sept. 11 from 8 AM to 5 PM and on Sept. 12 from 8 AM to 1 PM.



Then Get Ready for Fall Frenzy!

The weekend after Healing Fields takes place, Tempe Beach Park will be hosting a 3 day event called Fall Frenzy. Come out and join us for a rockin' good time! Tickets are available on a per day basis and there are different bands playing each day. The schedule of who is playing and gate times is listed on the right. There are a lot of great bands playing so it should be 3 great shows. Before you head down to Tempe, be sure to check out the website. There are several items that are NOT allowed into the event, so the FAQ will help you decide how to pack for the day. It also lists places to park and event hours. You can go straight to the website by clicking on the picture to the right.

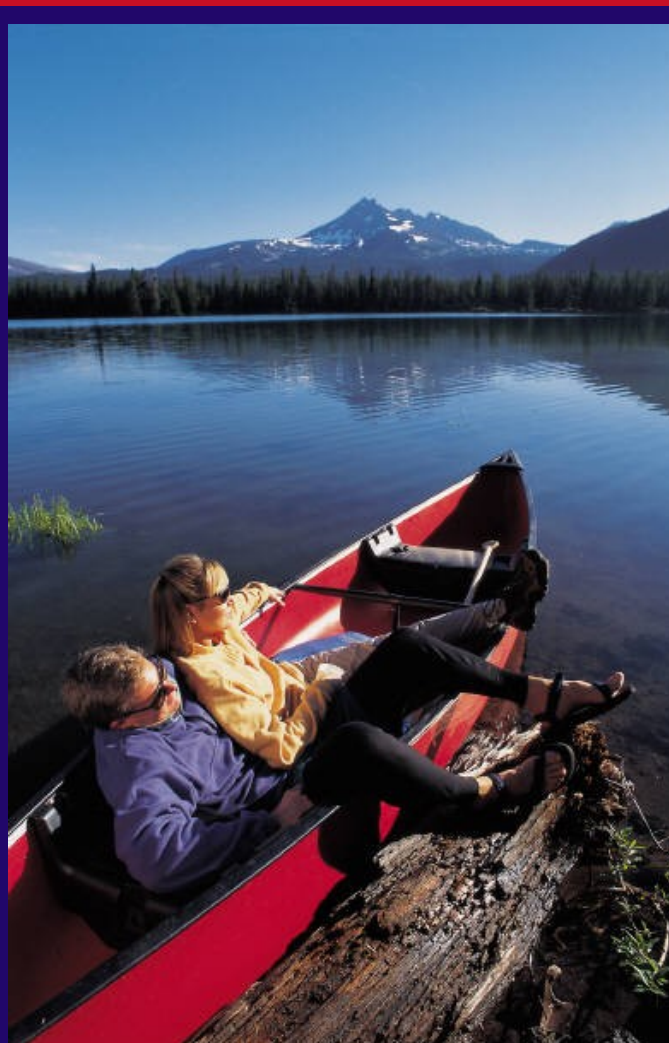


Help Yourself

Ever wanted to know what makes your customers angry? It is probably similar to what can make you angry at times when you get poor service. Clickfox surveyed more than 1,500 consumers to see what their top complaints were and also offers 3 solutions to keep your customers from feeling this way. [Read here](#) for this information on how to keep your customers happy.

The next big thing on Facebook is Facebook Places. This new program can be used by an app on the iPhone or by checking in via a computer at touch.facebook.com and will show where someone is via the location signal from their phone or computer if they check in. If someone is at your business and checks in, it will give your company more exposure and even sends a link when their message goes out, giving people the opportunity to visit your website. [Read more about it here.](#)

In this ever advancing world of technology we've come to expect immediate gratification and hence have learned how to multi-task in order to do more things at once. Multi-tasking has been proven time and time again to be a miserable failure, so what is the remedy for that? [Read here](#) for 8 tips on how you can reclaim your focus at work, and slow down to smell the roses.



Real living is living for others - Bruce Lee

Have a great Labor Day!



Subscribe Here

Share with a Friend

Unsubscribe



Find us on Facebook